



WebFlex Series

Process Monitor

PC Set-up Guide



INCLUDES

**Step-by-Step Set Up Procedures for
Modem Dial-Up USB & Driver installations**

Hycontrol Limited, Larchwood House, Orchard Street,
Redditch, Worcestershire, B98 7DP, England.
Tel: + 00 44 (0) 1527 406800 Fax: + 00 44 (0) 1527 406810
Email: sales@hycontrol.com Web: www.hycontrol.com

Start-Up Guide Contents

Introduction	Page 3
Getting Started Procedures	Pages 4-5
Dial Up Script Adapters	Pages 6-42
For Windows 2000	Pages 6-23
USB Driver Installation	
Direct Modem-to-Modem Set-Up	
Checking Internet Explorer Settings	
For Windows XP	Pages 24-41
USB Driver Installation	
Direct Modem-to-Modem Set-Up	
Checking Internet Explorer Settings	

Computer Requirements



The computer hardware guidelines which you use to surf the Internet are basically the same as what works for the Webflex connection. You'll need sufficient memory to run your computer's operating system and web browser, and a CPU with enough processing speed to easily handle web pages for easy viewing.

Personal computer requirements for all four methods of communication are as follows:

- ▶ **At least one available USB port**
- ▶ **100 MHz min. processor**
- ▶ **40MB minimum RAM**
- ▶ **Windows operating system** (2000 or XP)
- ▶ **Windows Internet Explorer** (ver. 5.0 or higher)

SUPPORT LITERATURE

Simple step-by-step instructions in our support literature will help make the start-up of your Webflex quick and easy. The following materials have been supplied to help get you started.

- Quick Start Guide
- Instruction Manual
- USB cable (A-B)
- USB Driver CD



Introduction

Welcome to your Set-up Guide. This guide is a short form version of the Instruction Manual focused on establishing basic communications to the Hycontrol Webflex.

There are four methods of communicating to your unit. Each connection is simple and requires no proprietary software on your computer.

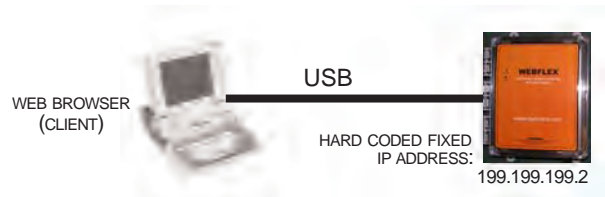
The four methods of communication with the Webflex are as follows:

1

USB (standard)

For local monitoring and reconfiguration of your unit via Laptop or dedicated on-site PC.

The PC must be Windows 2000 or XP.

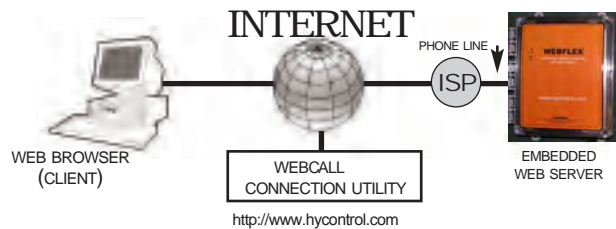


2

WEBCALL Internet Communications

For monitoring and reconfiguration of your unit remotely via the Internet.

(Requires modem card option)

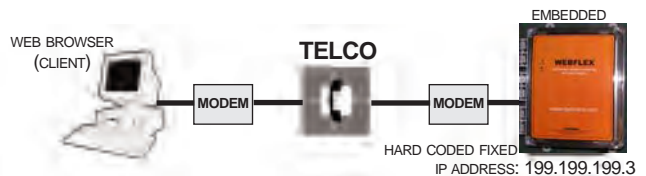


3

DirectCall Modem-to-Modem

For monitoring and reconfiguration of your unit remotely using traditional modem-to-modem communications.

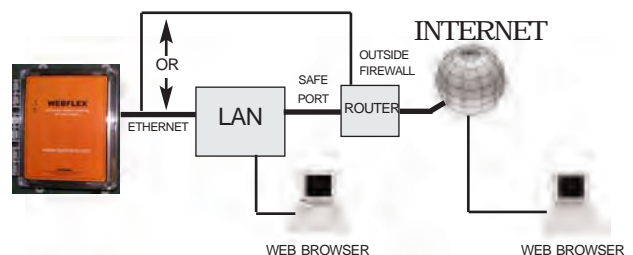
(Requires modem card option)



4

Ethernet

For monitoring and reconfiguration of your unit via Local Area Network or remotely via the Internet.





Getting Started

USB

On-site wet-up of your Webflex will most likely use the USB connection. USB is also ideal for training and sales presentations. **Section 4.6.1 in the Instruction Manual has detailed steps for initiating USB communications.**

The following steps are required to get started:





-  A USB driver needs to be added to your PC. This driver only needs to be installed once and can be used to communicate with any Webflex. The USB driver may only be used with Windows 2000 or XP operating systems.
-  Step-by-step instructions for installing the USB driver is included in this guide. Find the operating system that is installed on your computer (Windows 2000 or XP) and follow the instructions. The instruction manual will help guide you through the remainder of the process.

Webcall

The software allows you to communicate with the Webflex over the Internet without the need to be ON-LINE all the time. Having the Web based unit ON-LINE only when needed makes the connection secure and cost effective. The modem option must be installed in order to Webcall.

Powered by
WEBCALL

An Internet Service Provider (ISP) account must be established for your Webflex, similar to what you may use to access the Internet from home. This account provides the Web based unit with Internet dial-up access. The following information will be needed to establish ShoulderTap communications:

-  **ISP User Name** - the name that the controller will use to connect to the ISP
-  **ISP Password** - the security ID that the controller will use to connect to the ISP
-  **Controller Phone Number** - the number of the analog phone line attached to your Webflex ... this is used to identify which Webflex you want to communicate with.
-  **Local Access Number For The ISP** - the local phone number that the controller will dial out to for Internet access.

Section 4.6.2 in the Instruction Manual provides more details on the Webcall process.

Choosing An ISP

There is a large selection of ISPs available with a variety of service plans. However, Hycontrol recommends selecting an ISP that has easy access and is reliable. Some ISPs can have spotty coverage that can be very unreliable during peak hours.

Hycontrol strongly recommends the following ISPs for best results:

***<http://www.plus.net>
<http://www.supanet.com>
<http://www.ukonline.net>***

If you want to receive e-mails from your controller (alarms, datalogs and system summaries) your ISP will provide you with an SMTP server address.

The Communications section of the instruction manual provides additional instructions on receiving e-mails.

NOTE: You may be able to share an ISP account with several Webflex by simply using the same ISP information in each Webflex. An unlimited access program is ideal when sharing an ISP account amongst a group of controllers. For best results while sharing an account try to stagger usage. Access one controller at a time and set up auto reports to be sent at different times. The modem option is required for Webcall.

The Auto Reporting section in the Instruction Manual contains detailed information on auto-reporting.

DirectTap Modem - to - Modem

Your Webflex can also be accessed via DirectCall modem-to-modem communications. DirectCall is primarily used as a diagnostic tool or for initial set-up. DirectCall allows a user the ability to connect directly to the Web based unit via a phone line without using the Internet. Unlike Webcall, Direct Call is limited to one user at a time. DirectCall can be used to dial into a controller for initial set-up. The modem option is required to DirectCall.

Refer to section 4.6.4 in the Instruction Manual



Ethernet

Your Webflex can be placed directly on a Wide Area Network (WAN) or Local Area Network (LAN) just like any PC or standard piece of office equipment such as a network printer. The unit only needs to be assigned an IP address from the on-site IT administrator for access via an Ethernet connection for a Webflex.

Section 4.6.3 of the manual provides a step by step guide for Ethernet communications.

SET-UP GUIDE



WINDOWS 2000

SECTION I

- 1. USB Driver Installation**
- 2. Direct Modem-to-Modem Communications**
- 3. Checking Internet Explorer Settings**



BEFORE INSERTING CD INTO YOUR COMPUTER, FOLLOW STEPS 1-3 BELOW!

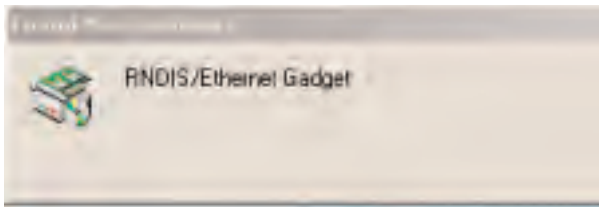


Fig. 1

- ▶ Power up your computer and the Webflex controller. Connect the supplied USB cable between the computer USB port and the Webflex USB port. You'll see this "Found New Hardware" message.



Fig. 2

- ▶ click **Next** to continue

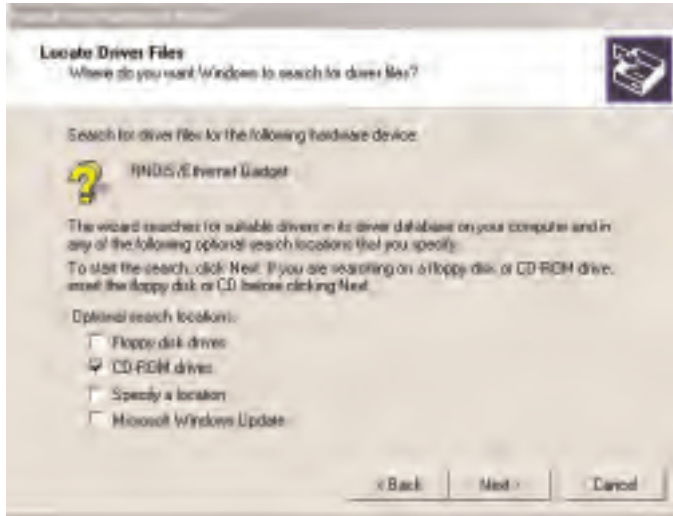


Fig. 3

- ▶ click **Search for a suitable driver for my device**

USB Driver Installation (continued)

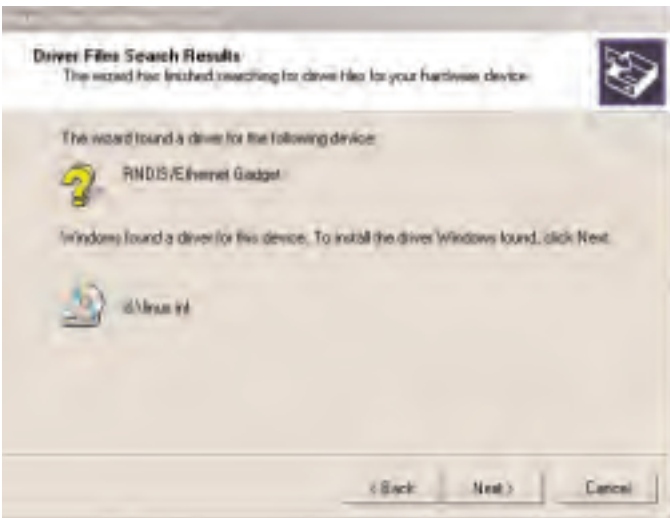
Fig. 4



- ▶ click box to left of **CD ROM drives** and insert the CD supplied with your controller into the CD ROM drive

- ▶ click **Next >**

Fig. 5



- ▶ click **Next >**

Fig. 6



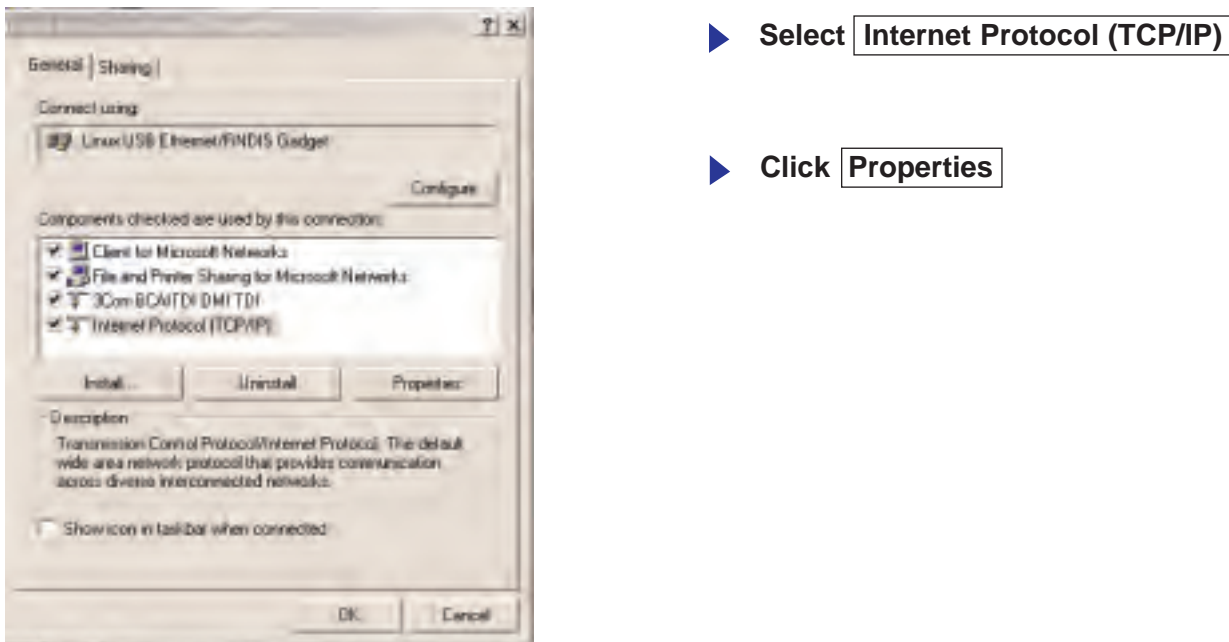
- ▶ click **Yes**

USB Driver Installation (*continued*)

Fig. 9

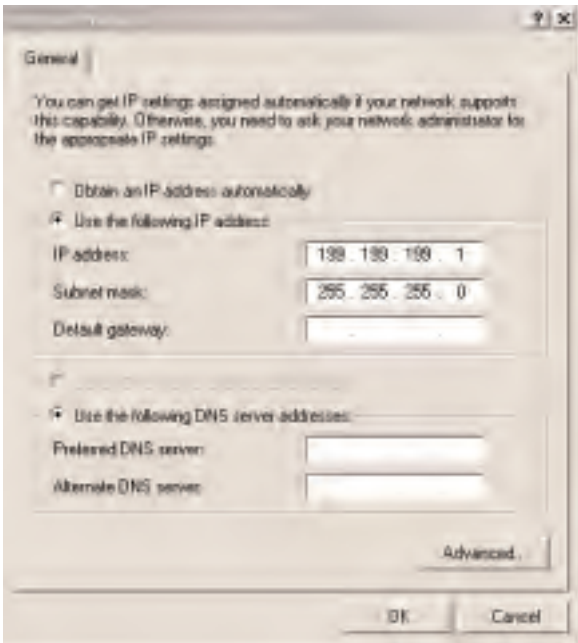


Fig. 10



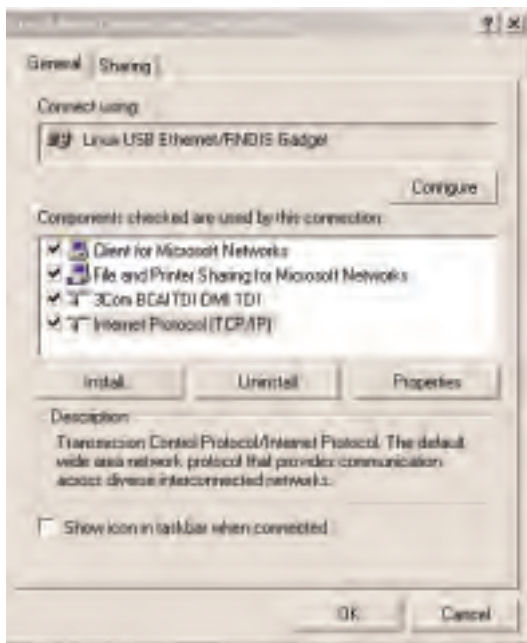
USB Driver Installation (*continued*)

Fig. 11



- ▶ Click **Use the following IP address**
- ▶ In the IP address box, type **199.199.199.1**
- ▶ In the Subnet mask box, type **255.255.255.0**
- ▶ Click **OK**

Fig. 12



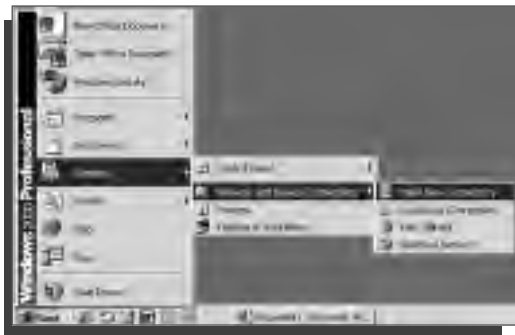
- ▶ Click **OK**
- ▶ Open Internet Explorer and type **“199.199.199.2”** in the address bar. This will give you direct access to the login page of the controller. From this point on, you will only need to connect the USB cable to the controller and type in that address to have a local connection to your controller.



2. DIRECT MODEM SET-UP FOR WINDOWS 2000

Create Direct Modem Dial-Up Adapter

Fig. 1



- ▶ click **Start** and then select **Settings**
- ▶ click **Network and Dial-Up Connections**
- ▶ click **Make New Connection**

Fig. 2



- ▶ click **Next >**

Fig. 3



- ▶ click **Dial-up to private network**
- ▶ click **Next >**

DIRECT MODEM SET-UP FOR WINDOWS 2000

Create Direct Modem Dial-Up Adapter *(continued)*

Fig. 4



- ▶ enter Controller phone number in

Phone number: box

- ▶ click **Next >**

Fig. 5



- ▶ click **Only for myself**

- ▶ click **Next >**

Fig. 6



- ▶ type an appropriate name for your connection in the text box

- ▶ click **Finish**

DIRECT MODEM SET-UP FOR WINDOWS 2000

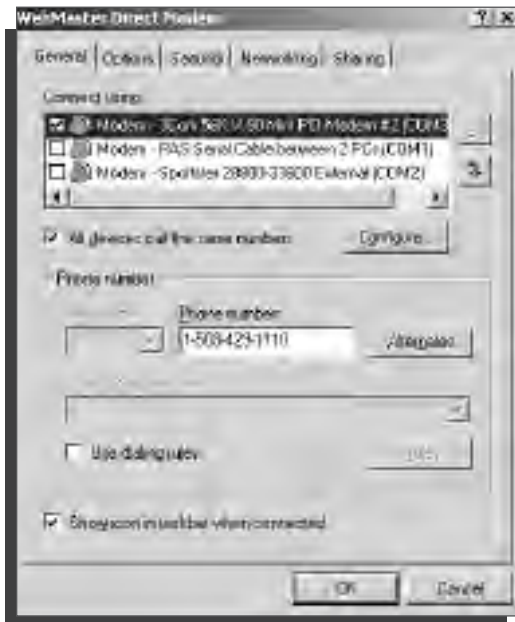
Create Direct Modem Dial-Up Adapter *(continued)*

Fig. 7



▶ click **Properties**

Fig. 8

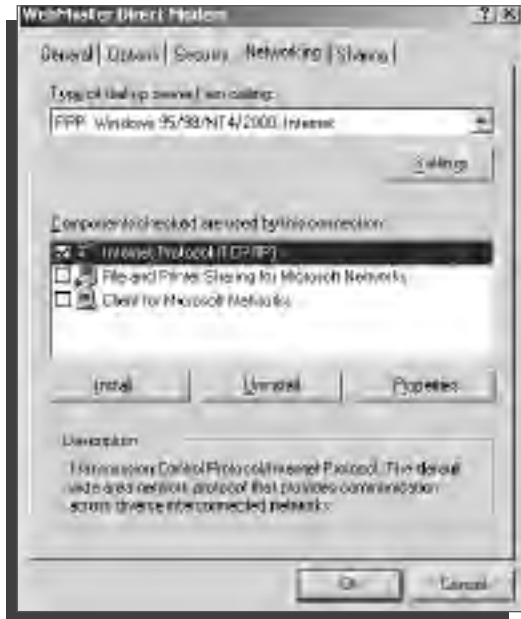


▶ click **Networking tab**

DIRECT MODEM SET-UP FOR WINDOWS 2000

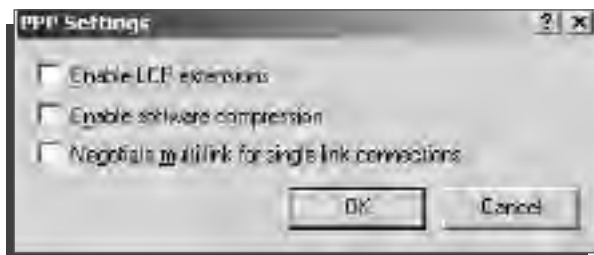
Create Direct Modem Dial-Up Adapter *(continued)*

Fig. 9



- ▶ check **Internet Protocol (TCP/IP)**
- ▶ uncheck all others
- ▶ click **Settings**

Fig. 10



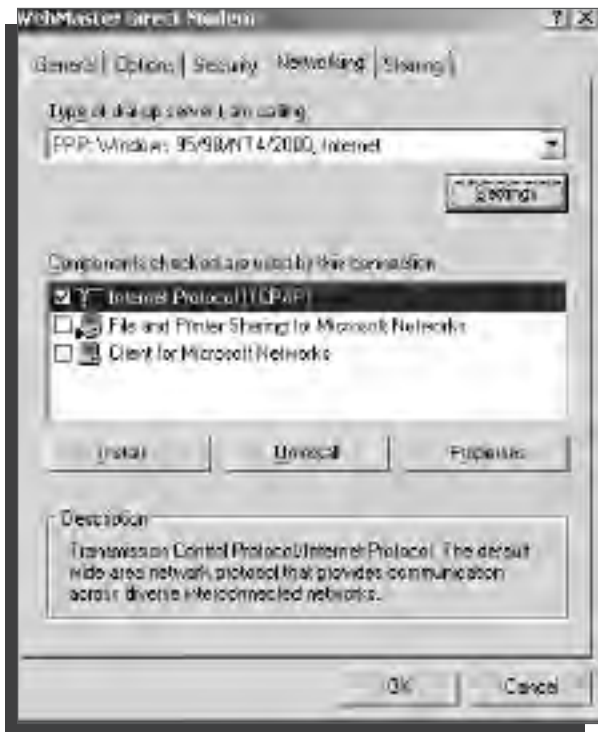
- ▶ un-check all 3 options
- ▶ click **OK**



DIRECT MODEM SET-UP FOR WINDOWS 2000

Create Direct Modem Dial-Up Adapter (*continued*)

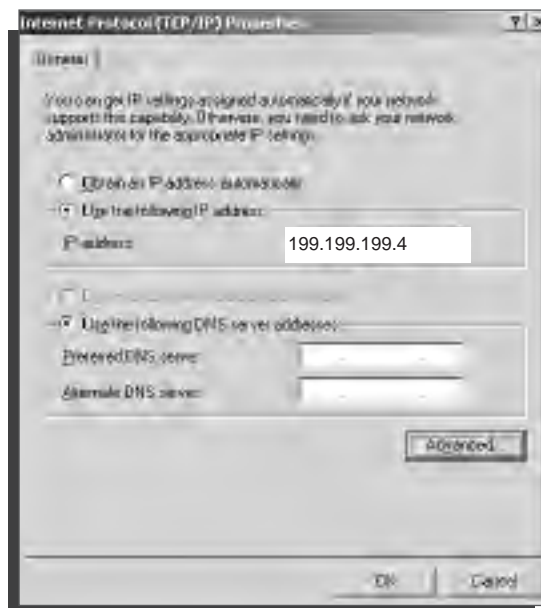
Fig. 11



▶ highlight **Internet Protocol (TCP/IP)**

▶ click **Properties**

Fig. 12



▶ click **Use the following IP address**

▶ enter IP address **199.199.199.4**

▶ click **Advanced**

DIRECT MODEM SET-UP FOR WINDOWS 2000

Create Direct Modem Dial-Up Adapter *(continued)*

Fig. 13

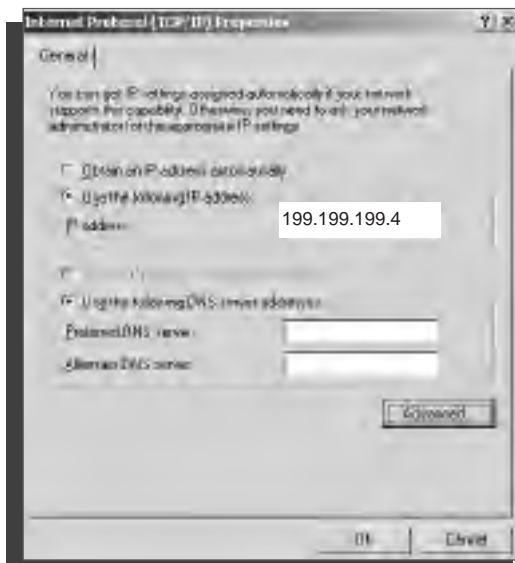


▶ uncheck **Use default gateway on remote network**

▶ uncheck **Use IP header compression**

▶ click **OK**

Fig. 14

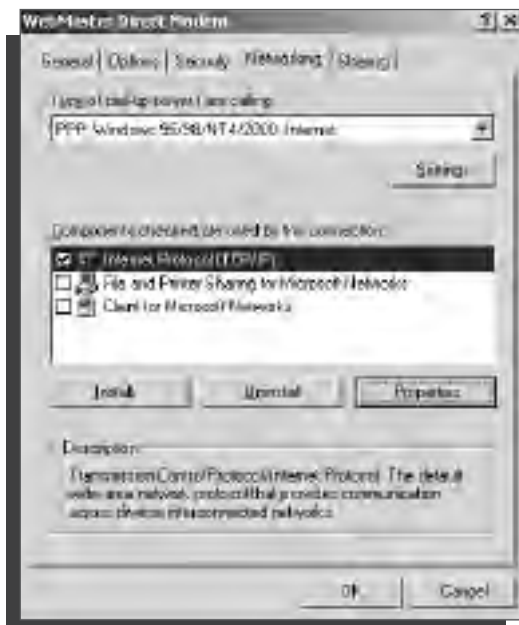


▶ click **OK**

DIRECT MODEM SET-UP FOR WINDOWS 2000

Create Direct Modem Dial-Up Adapter (*continued*)

Fig. 15



► click **OK**

Fig. 16

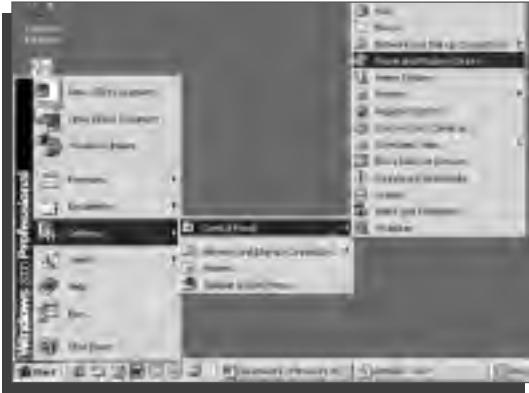


► click **Cancel**

DIRECT MODEM SET-UP FOR WINDOWS 2000

Create Direct Modem Dial-Up Adapter *(continued)*

Fig. 17



- ▶ click **Start**
- ▶ click **Settings**
- ▶ click **Control Panel**
- ▶ click **Phone and Modem Options**

Fig. 18



- ▶ click **Modems** tab

DIRECT MODEM SET-UP FOR WINDOWS 2000

Create Direct Modem Dial-Up Adapter *(continued)*

Fig. 19



▶ select modem

▶ click **Properties**

Fig. 20



▶ click **Advanced Tab**

DIRECT MODEM SET-UP FOR WINDOWS 2000

Create Direct Modem Dial-Up Adapter *(continued)*

Fig. 21



- ▶ enter **S7=200** in extra initialization commands text box
- ▶ click **Change Default Preferences**

Fig. 22



- ▶ enter **120** in **Cancel the call if not connected within...** text box
- ▶ click **OK**



DIRECT MODEM SET-UP FOR WINDOWS 2000

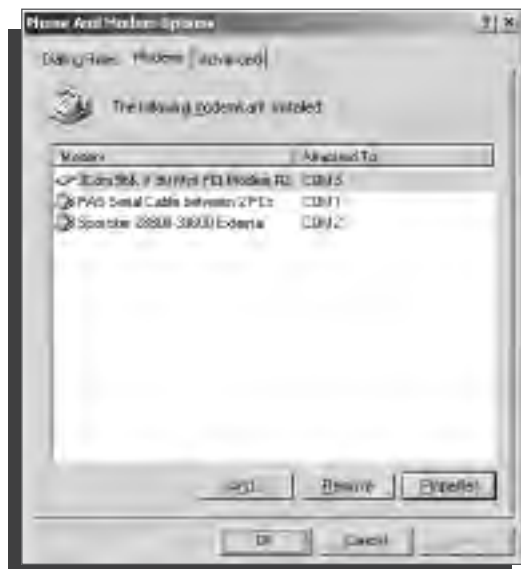
Create Direct Modem Dial-Up Adapter *(continued)*

Fig. 23



► click **OK**

Fig. 24

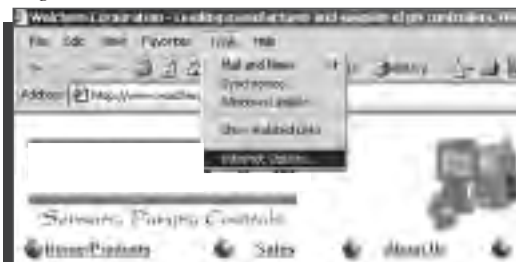


► click **OK**



3. CHECK INTERNET EXPLORER SETTINGS

Fig. 1



- ▶ click **Tools** from top menu bar
- ▶ select **Internet Options...** from drop down menu

Fig. 2



- ▶ click **Connections** tab

Fig. 3



- ▶ click **Never dial a connection**
- ▶ click **OK**

SET-UP GUIDE



WINDOWS XP

SECTION II

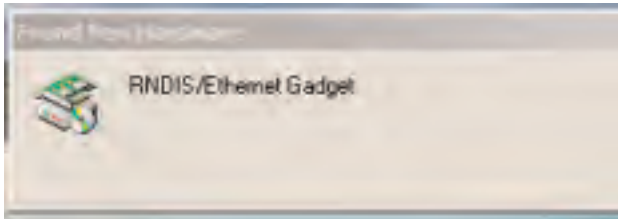
- 1. USB Driver Installation**
- 2. Direct Modem-to-Modem Communications**
- 3. Checking Internet Explorer Settings**



1. USB Driver Installation

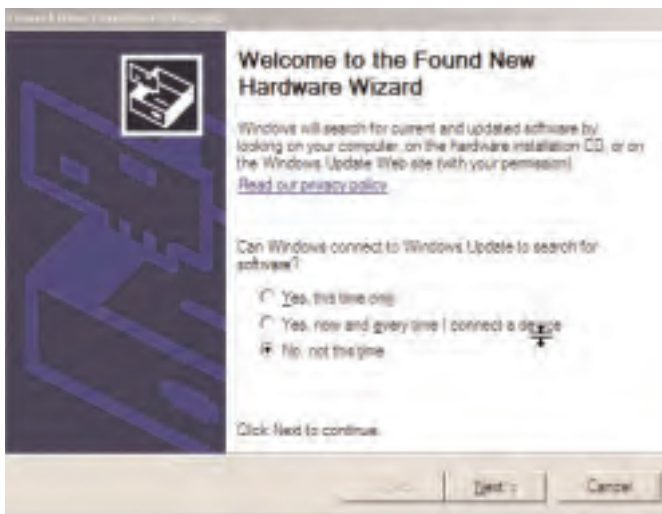
BEFORE INSERTING CD INTO YOUR COMPUTER, FOLLOW STEPS 1-3 BELOW!

Fig. 1



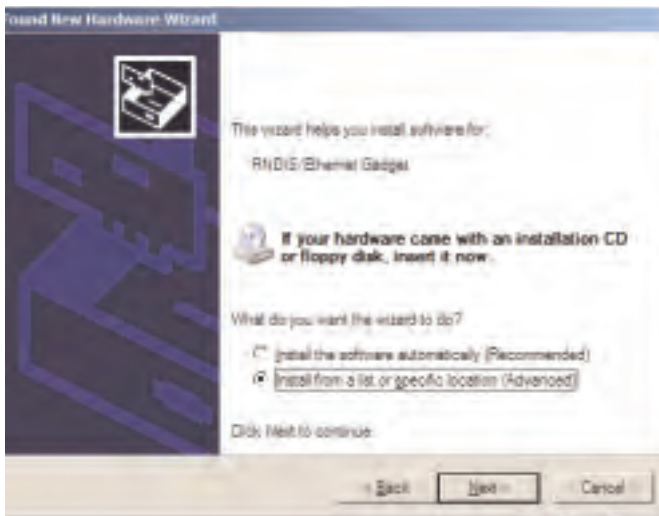
- ▶ Power up your computer and the Webflex controller. Connect the supplied USB cable between the computer USB port and the Webflex USB port. You'll see this "Found New Hardware" message.

Fig. 2



- ▶ click **No, not this time**
- ▶ click **Next**

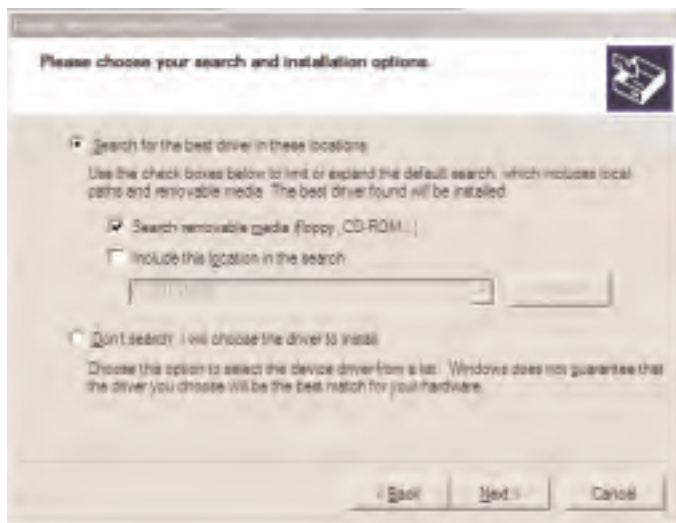
Fig.3



- ▶ click **Install from a list or specific location**
- ▶ click **Next**

USB Driver Installation (*continued*)

Fig. 4

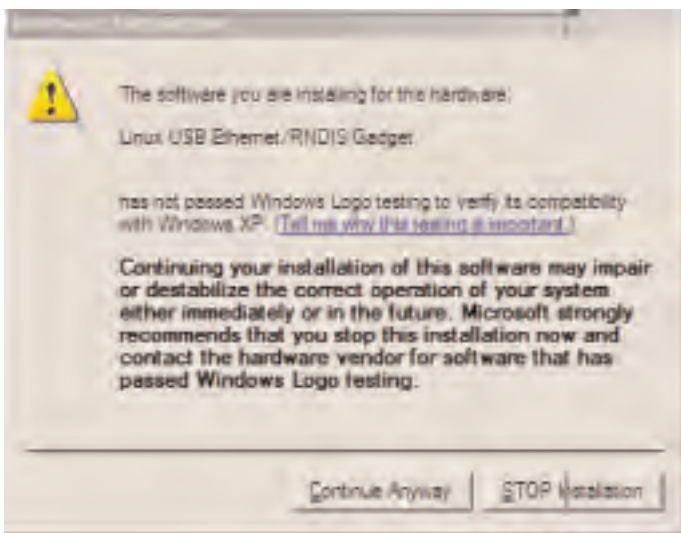


- ▶ click **Search for the best driver**

- ▶ check the box next to **Search removable media** and insert the CD supplied with your controller into the CD ROM drive

- ▶ click **Next >**

Fig. 5



- ▶ click **Continue Anyway**

USB Driver Installation (*continued*)

Fig. 6



- ▶ click **Finish**
- ▶ Repeat this procedure for each USB port on your computer that may be used for a connection.

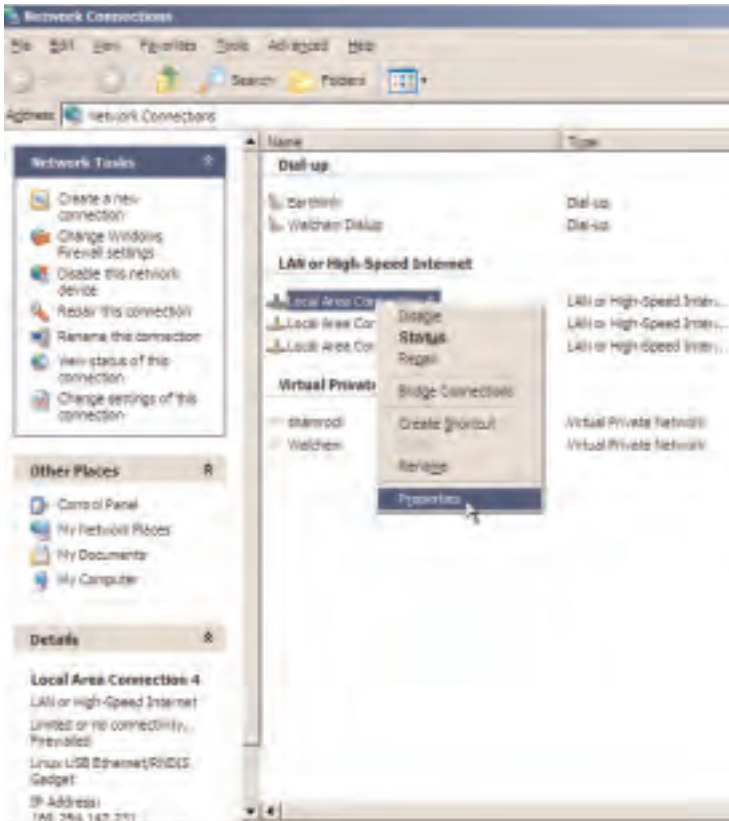
Fig. 7



- ▶ click **Start** , then **Connect To**
- ▶ click **Show all connections**

USB Driver Installation (continued)

Fig. 8



- ▶ right click the new **Local Area Connection** (usually called #2)

- ▶ click **Properties**

Fig. 9

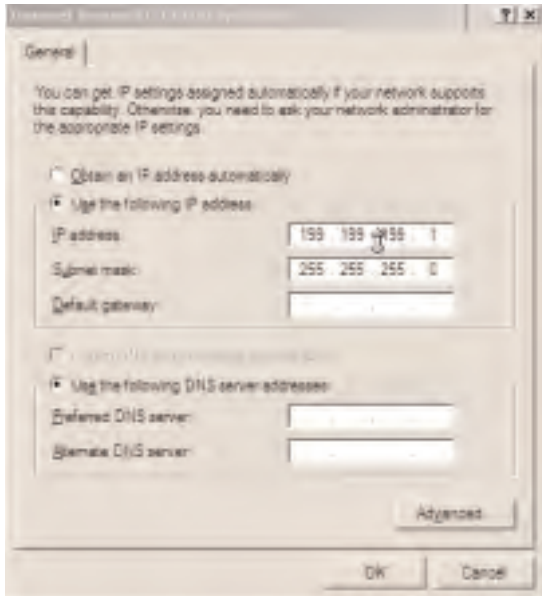


- ▶ Select **Internet Protocol (TCP/IP)**

- ▶ Click **Properties**

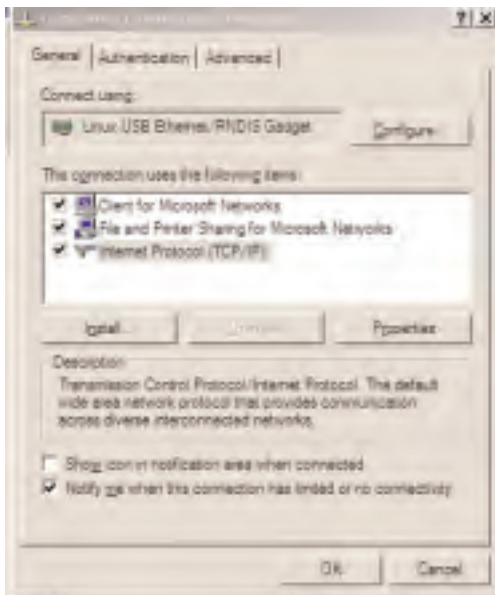
USB Driver Installation (continued)

Fig. 10



- ▶ Click **Use the following IP address**
- ▶ In the IP address box, type **199.199.199.1**
- ▶ In the Subnet mask box, type **255.255.255.0**
- ▶ Click **OK**

Fig. 11

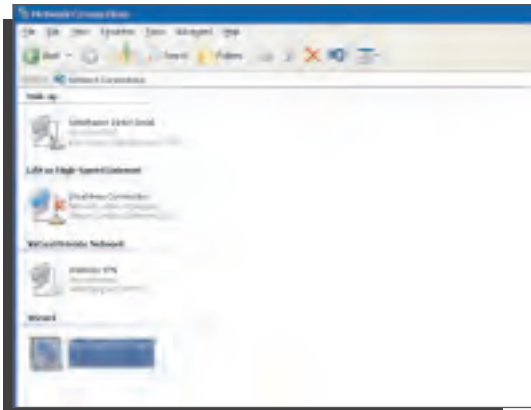


- ▶ Click **OK**
- ▶ Open your Browser and type "199.199.199.2" in the address bar. This will give you direct access to the login page of the controller. From this point on, you will only need to connect the USB cable to the controller and type in this address to have a local connection to your controller
Save it as a Favourite or Bookmark.

2. DIRECT MODEM SET-UP FOR WINDOWS XP

Create Direct Modem Dial-Up Adapter

Fig. 1



▶ Return to **Control Panel, Network Connections**

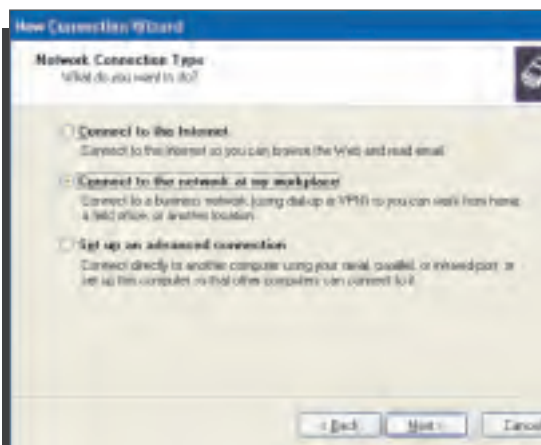
▶ double click **New Connection Wizard**

Fig. 2



▶ click **Next >**

Fig. 3



▶ select

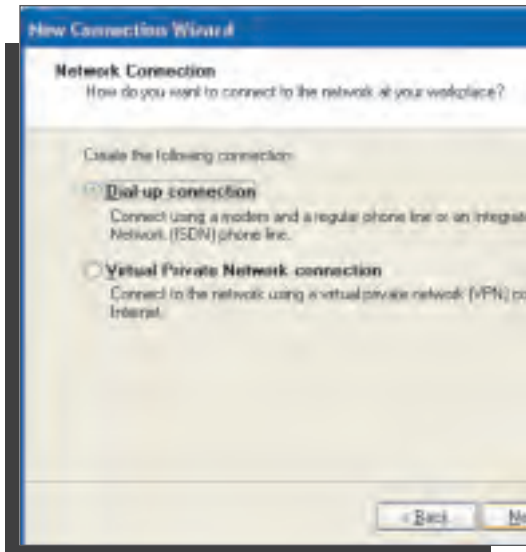
Connect to the network at my workplace

▶ click **Next >**

DIRECT MODEM SET-UP FOR WINDOWS XP

Create Direct Modem Dial-Up Adapter *(continued)*

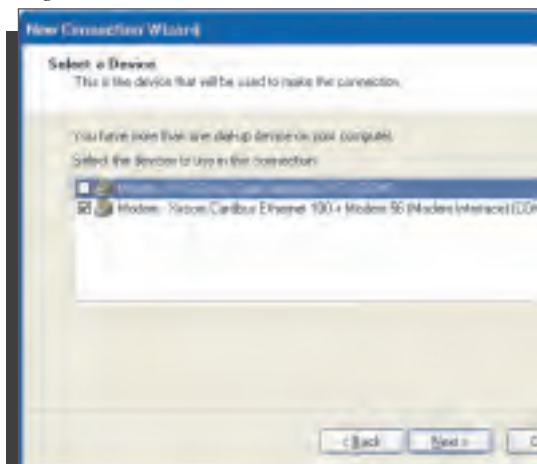
Fig. 4



▶ select **Dial-up connection**

▶ click **Next >**

Fig. 5



▶ check the appropriate modem

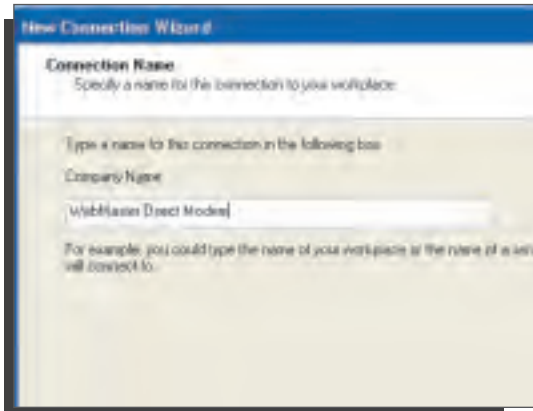
▶ uncheck all others

▶ click **Next >**

DIRECT MODEM SET-UP FOR WINDOWS XP

Create Direct Modem Dial-Up Adapter *(continued)*

Fig. 6



- ▶ Type an appropriate name for the connection
- ▶ click **Next >**

Fig. 7



- ▶ enter the phone number for the Webflex controller that you will be connecting to (include area code and '1' if necessary)
- ▶ click **Next >**

Fig. 8



- ▶ select **My use only**
- ▶ click **Next >**

DIRECT MODEM SET-UP FOR WINDOWS XP

Create Direct Modem Dial-Up Adapter (*continued*)

Fig. 9



- ▶ check

Add a shortcut to this connection to my desktop

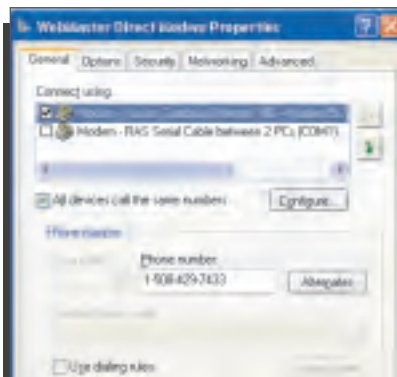
- ▶ click **Finish**

Fig. 10



- ▶ click **Properties**

Fig. 11

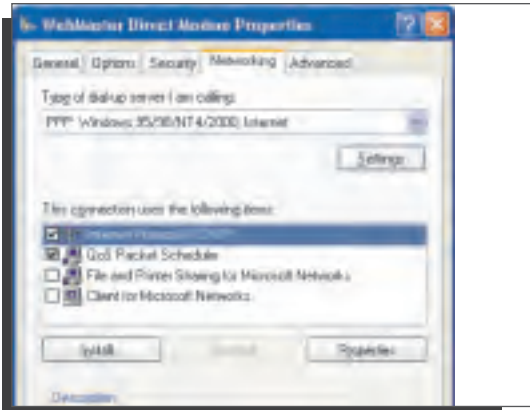


- ▶ click the **Networking** tab

DIRECT MODEM SET-UP FOR WINDOWS XP

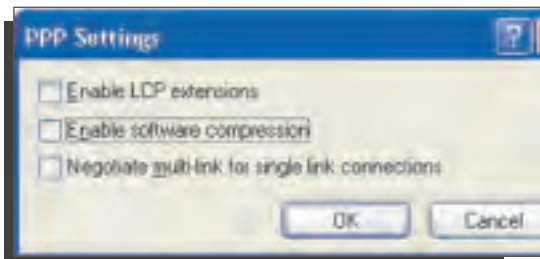
Create Direct Modem Dial-Up Adapter *(continued)*

Fig. 6



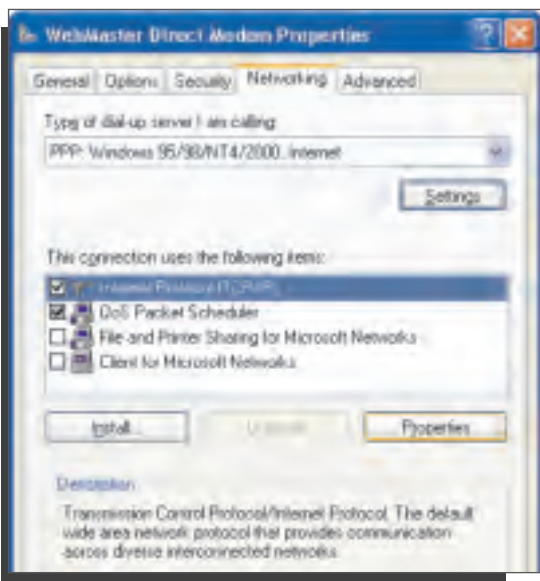
- ▶ check **Internet Protocol (TCP/IP)**
- ▶ uncheck all others
- ▶ click **Settings**

Fig. 7



- ▶ uncheck all three options
- ▶ click **OK**

Fig. 8

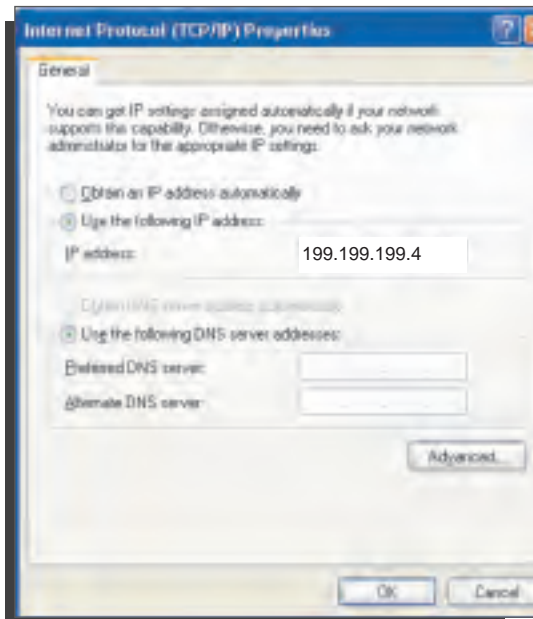


- ▶ highlight **Internet Protocol (TCP/IP)**
- ▶ click **Properties**

DIRECT MODEM SET-UP FOR WINDOWS XP

Create Direct Modem Dial-Up Adapter *(continued)*

Fig. 9



- ▶ select **Use the following IP address**
- ▶ enter IP address **199.199.199.4**
- ▶ click **Advanced**

Fig. 10

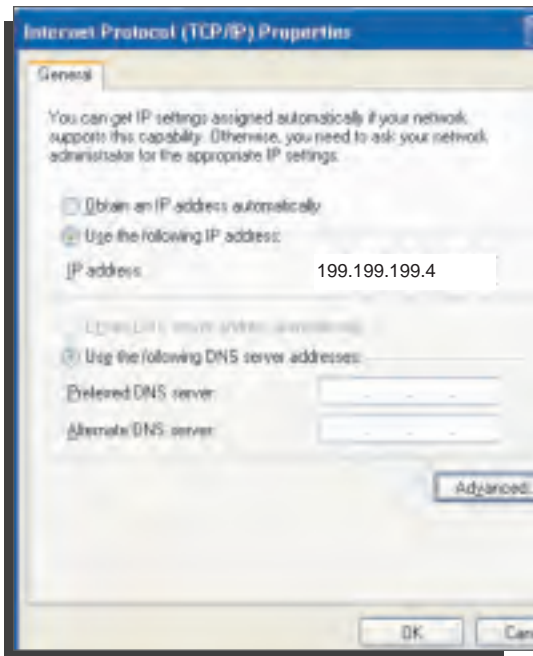


- ▶ uncheck both boxes
- ▶ click **OK**

DIRECT MODEM SET-UP FOR WINDOWS XP

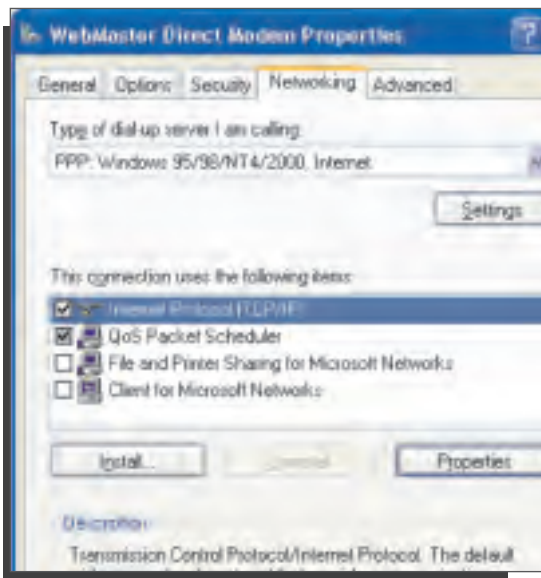
Create Direct Modem Dial-Up Adapter *(continued)*

Fig. 11



► click **OK**

Fig. 12



► Click **OK**

DIRECT MODEM SET-UP FOR WINDOWS XP

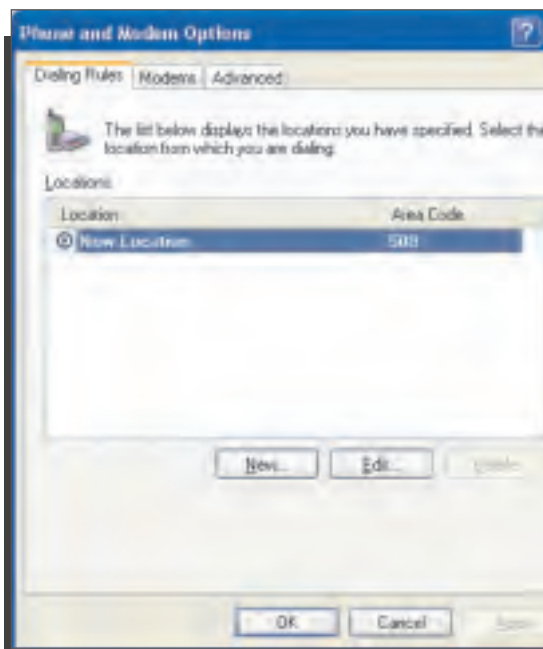
Create Direct Modem Dial-Up Adapter *(continued)*

Fig. 13



▶ click **Cancel**

Fig. 14



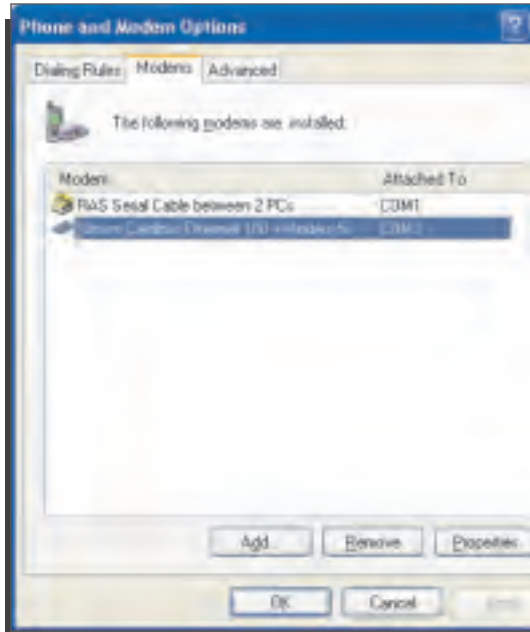
▶ return to Control Panel and double click **Phone and Modem Options**

▶ click **Modems** tab

DIRECT MODEM SET-UP FOR WINDOWS XP

Create Direct Modem Dial-Up Adapter (*continued*)

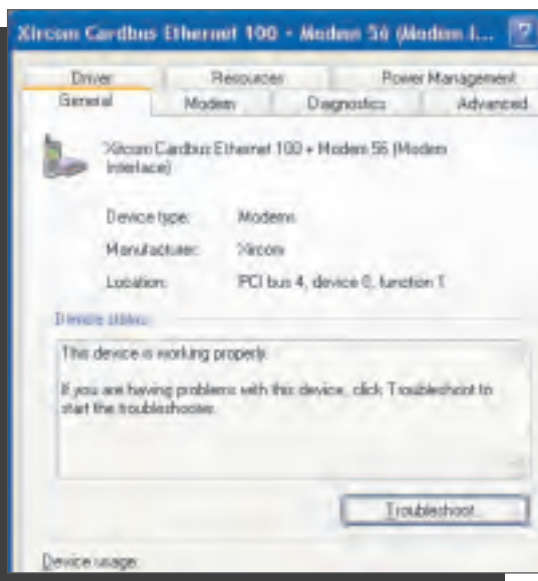
Fig. 15



▶ highlight modem to be used

▶ click **Properties**

Fig. 16

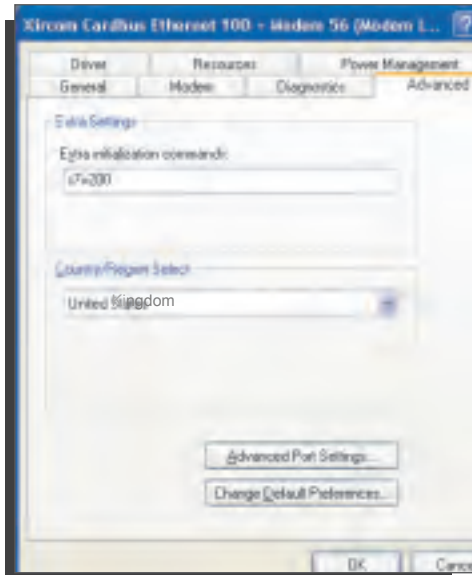


▶ Click the **Advanced** tab

DIRECT MODEM SET-UP FOR WINDOWS XP

Create Direct Modem Dial-Up Adapter *(continued)*

Fig. 17



- ▶ in the **Extra initialization commands** box

enter **S7=200**

- ▶ click **Change Default Preferences**

Fig. 18



- ▶ enter **180** in

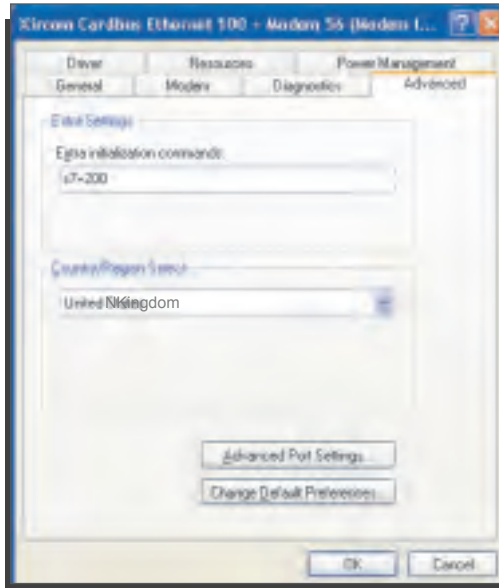
Cancel the call if not connected within box

- ▶ click **OK**

DIRECT MODEM SET-UP FOR WINDOWS XP

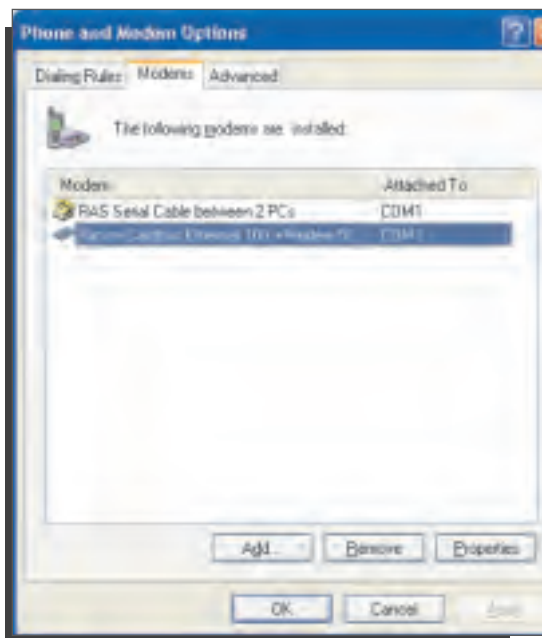
Create Direct Modem Dial-Up Adapter *(continued)*

Fig. 19



► click **OK**

Fig. 16



► Click **OK**



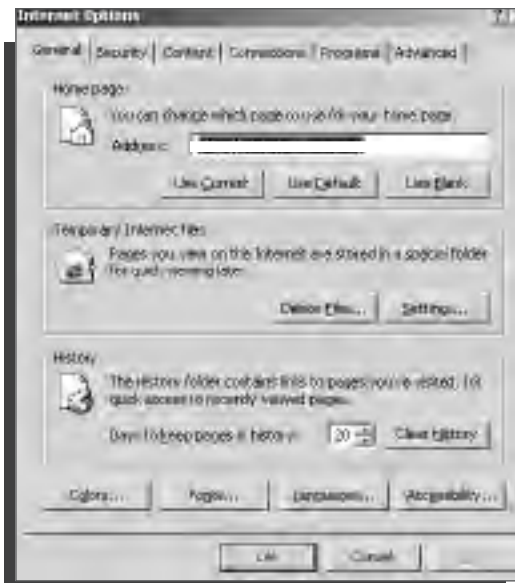
3. CHECK INTERNET EXPLORER SETTINGS

Fig. 1



- ▶ click **Tools** from top menu bar
- ▶ select **Internet Options...** from drop down menu

Fig. 2



- ▶ click **Connections** tab

Fig. 3



- ▶ click **Never dial a connection**
- ▶ click **OK**